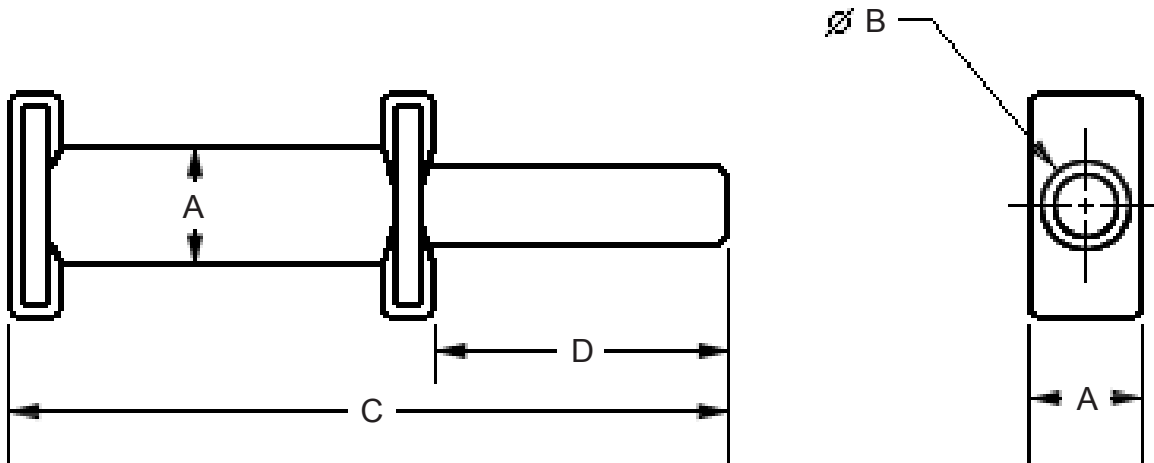


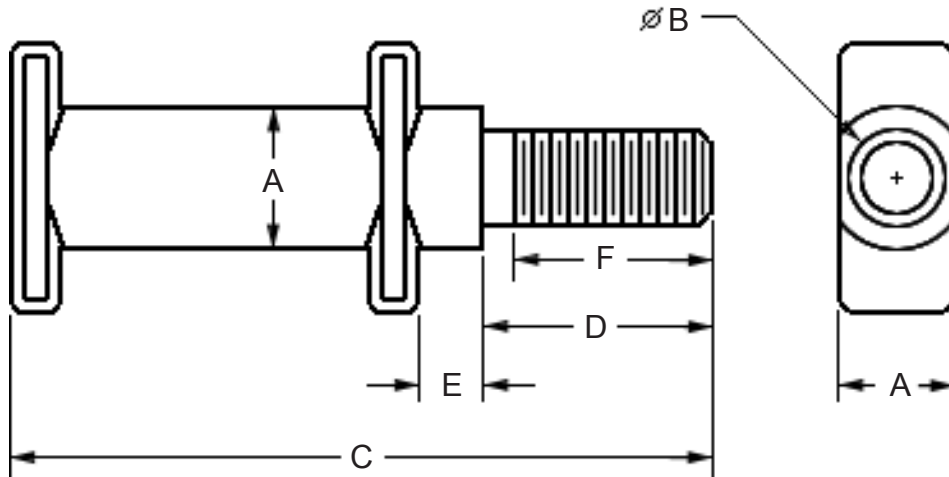
Extended Pins

458 Extended Pins



CHAIN SIZE	PART #	MATERIAL	A	B	C	D
X-458	3412	MICROTUFF 15	0.625"	0.50"	3.68"	1.50"
X-458	34120	8642 ALLOY	0.625"	0.50"	3.68"	1.50"

678 Extended Pins



CHAIN SIZE	PART #	MATERIAL	A	B	C	D	E	F
X-678	3615	MICROTUFF 15	0.88"	5/8-11	4.75"	1.25"	0.50"	1.00"
X-678	36150	8642 ALLOY	0.88"	5/8-11	4.75"	1.25"	0.50"	1.00"
X-678	3616	MICROTUFF 15	0.88"	5/8-11	5.12"	1.62"	0.50"	1.13"
X-678	36160	8642 ALLOY	0.88"	5/8-11	5.12"	1.62"	0.50"	1.13"

Note: Extended Ends are Induction Annealed