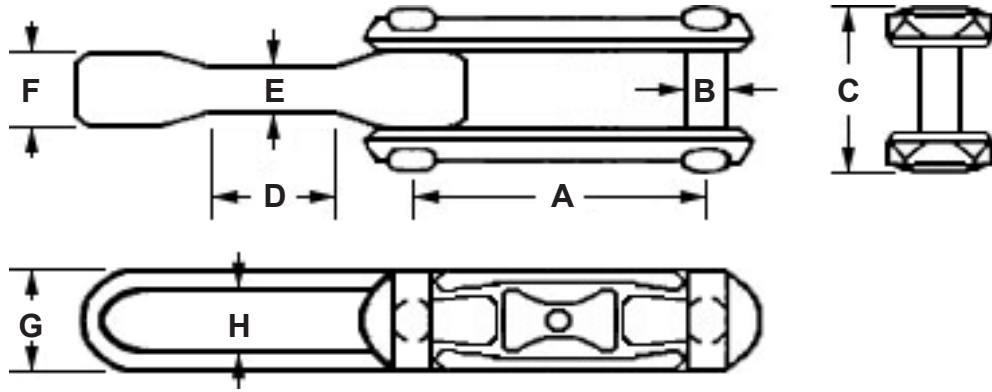


Rivetless Chain



CHAIN SIZE	MATERIAL	AVG. ULT. STRENGTH	A	B	C	D	E	F	G	H
X-348	CARBON MICROTUFF 15	26,000 lbs 26,000 lbs	3	.50"	1.84"	1.63"	.50"	.75"	1.09"	.562"
X-458	CARBON MICROTUFF 15 HIGH ALLOY	52,000 lbs 60,000 lbs 60,000 lbs	4	.625"	2.25"	2.25"	.625"	1.00"	1.41"	.687"
X-678	CARBON MICROTUFF 15 HIGH ALLOY	112,000 lbs 120,000 lbs 120,000 lbs	6	.875"	3.13"	3.38"	.812"	1.28"	2.00"	.969"
698	MICROTUFF 15	160,000 lbs	6	1.12"	3.75"	3.50"	1.00"	1.55"	2.75"	1.25"

MATERIAL SPEC		CARBON (4140)	MICROTUFF 15	HIGH ALLOY (8642)
HEAT TREAT		375-429	375-429	*=401-440 **=429-461
PART #		PART #	PART #	PART#
PIN	348	1732A	1732	1735*
	458	1742A	1742	1745*
	678	1762A	1762	1765**
	698	1862A	1862	1865
MATERIAL SPEC		CARBON (1048)	MICROTUFF 15	HIGH ALLOY (8642)
HEAT TREAT		341-390	375-429	*=401-440 **=429-461
PART #		PART #	PART #	PART#
CENTERLINK	348	1730A	1730	1733*
	458	1740A	1740	1743*
	678	1760A	1760	1763**
	698	1860A	1860	1863
MATERIAL SPEC		CARBON (1045)	MICROTUFF 15	HIGH ALLOY (8642)
HEAT TREAT		301-344	375-429	*=401-440 **=429-461
PART #		PART #	PART #	PART#
SIDE LINK	348	1731A	1731	1734*
	458	1741A	1741	1744*
	678	1761A	1761	1764**
	698	1861A	1861	1864